

2803/305

CLOTHING CONSTRUCTION III

PRACTICAL

Oct./Nov. 2015

Time: 6 hours



THE KENYA NATIONAL EXAMINATIONS COUNCIL

**DIPLOMA IN FASHION DESIGN AND  
CLOTHING TECHNOLOGY  
MODULE III**

**CLOTHING CONSTRUCTION III PRACTICAL**

**6 hours**

**INSTRUCTIONS TO CANDIDATES**

1. *You should have the following items for this examination:*

- (i) plain medium weight fabric 2 metres long by 152 cm wide;
- (ii) fusible interfacing 79 cm by 50 cm;
- (iii) two buttons with shank  $1\frac{1}{2}$  cm diameter;
- (iv) thread to match the fabric;
- (v) brown papers;
- (vi) sewing tools;
- (vii) one large envelope.

2. *At the end of the examination:*

- (a) stitch on a label bearing your name and index number on a single layer of fabric without concealing any details;
- (b) enclose the garment in the envelope provided.

**This paper consists of 3 printed pages.**

**Candidates should check the question paper to ascertain that all the pages are printed as indicated and that no questions are missing.**



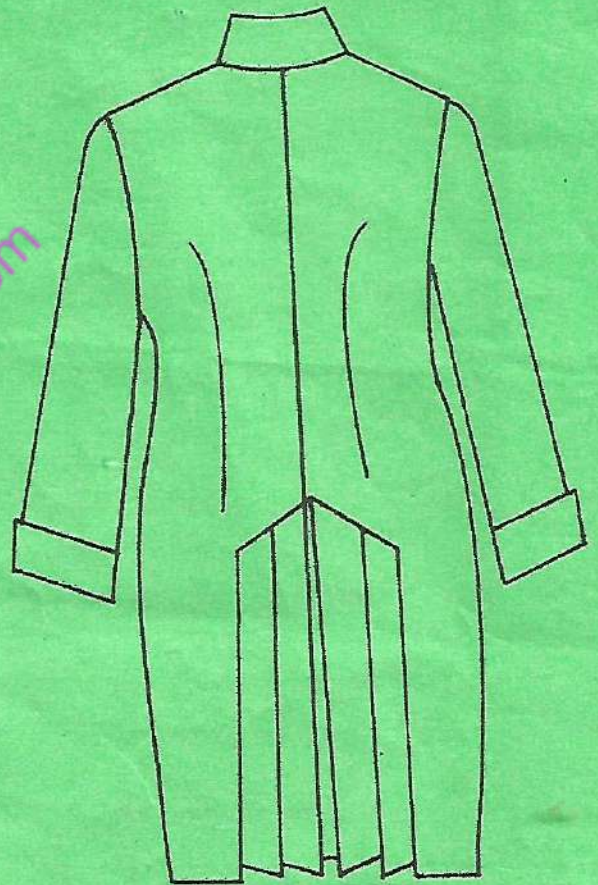
## TASKS

Using the measurements and the materials provided, cut out and make the garment style sketched below as follows:

- (a) use plain open seams at the shoulders, sides and underarms;
- (b) make two parallel buttonholes at the break point and attach the buttons;
- (c) slip hem the garment;
- (d) understitch the facings.



FRONT VIEW



BACK VIEW



### Measurements

Bust	-	76 cm
Waist	-	63 cm
Hips	-	80 cm
Neck	-	33 cm
Back width	-	31 cm
Waist to hip	-	16 cm
Nape to waist	-	34 cm
Full length	-	86 cm
Shoulder	-	11 cm
Sleeve length	-	54 cm
Wrist	-	30 cm
Pleat depth	-	3 cm

[easylvet.com](http://easylvet.com)  
**THIS IS THE LAST PRINTED PAGE.**